

Load Genie®

Continuous Run Vent Unloaders

Mark II Load Genie®

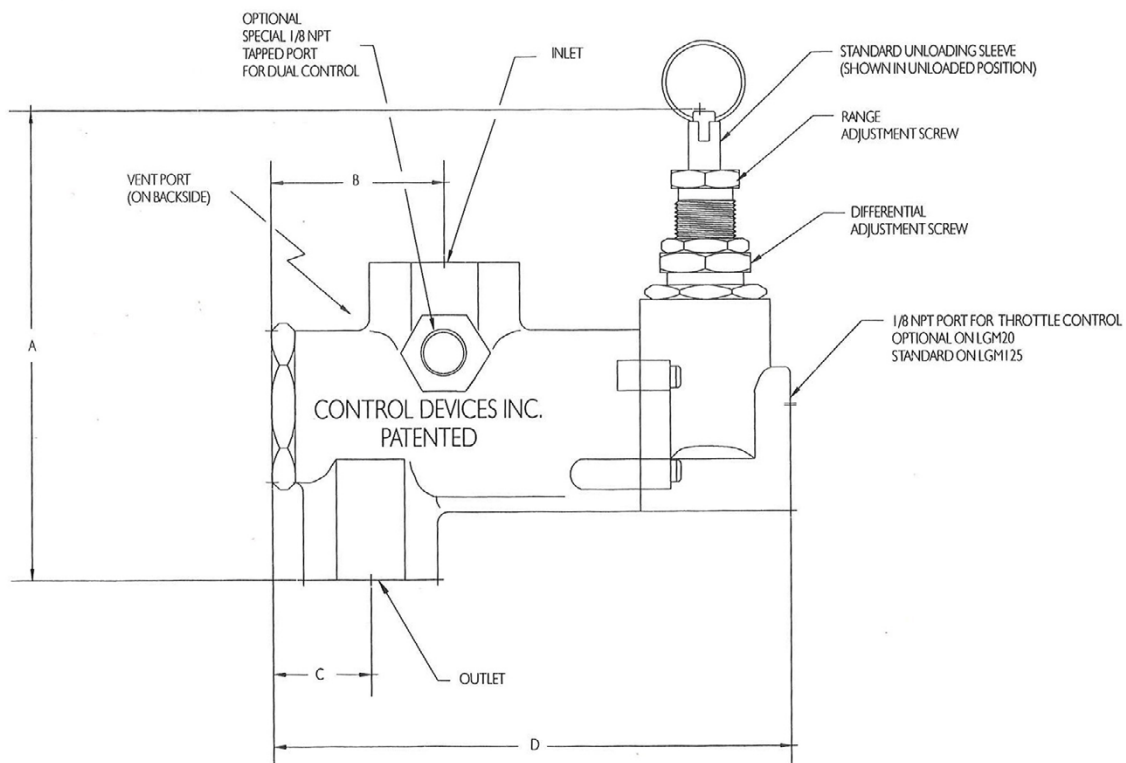
The Mark II Load Genie® is a self-contained unloading valve and can be used wherever a continuous run compressor is required. The compressor may need to run continuously because the air demand is close to the maximum output of the compressor, or because the compressor is driven by a gasoline or diesel engine.

Since the Mark II is a "vent" unloader, no built-in head unloaders are required on the compressor. The Mark II contains all components required; the pilot valve, the vent valve, and a check valve. Simply install the Mark II in the discharge line between the compressor and receiver.

Valve cut-in and cut-out pressures are factory set per customer specifications. Minimum cut-out pressure is 60 psi and maximum cut-out pressure is 250 psi. If no settings are specified, the valve is set at our standard setting of 115 psi cut-out and 95 psi cut-in. The valve is also field adjustable. Adjustment ranges are shown on opposite page.

Details of construction include forged brass body, brass and zinc-plated steel internal components, stainless steel springs, and glass-filled fluoropolymer poppets. Valve is available in two sizes, the LGM20 for applications up to 20 SCFM, and the LGM125 for applications up to 125 SCFM.

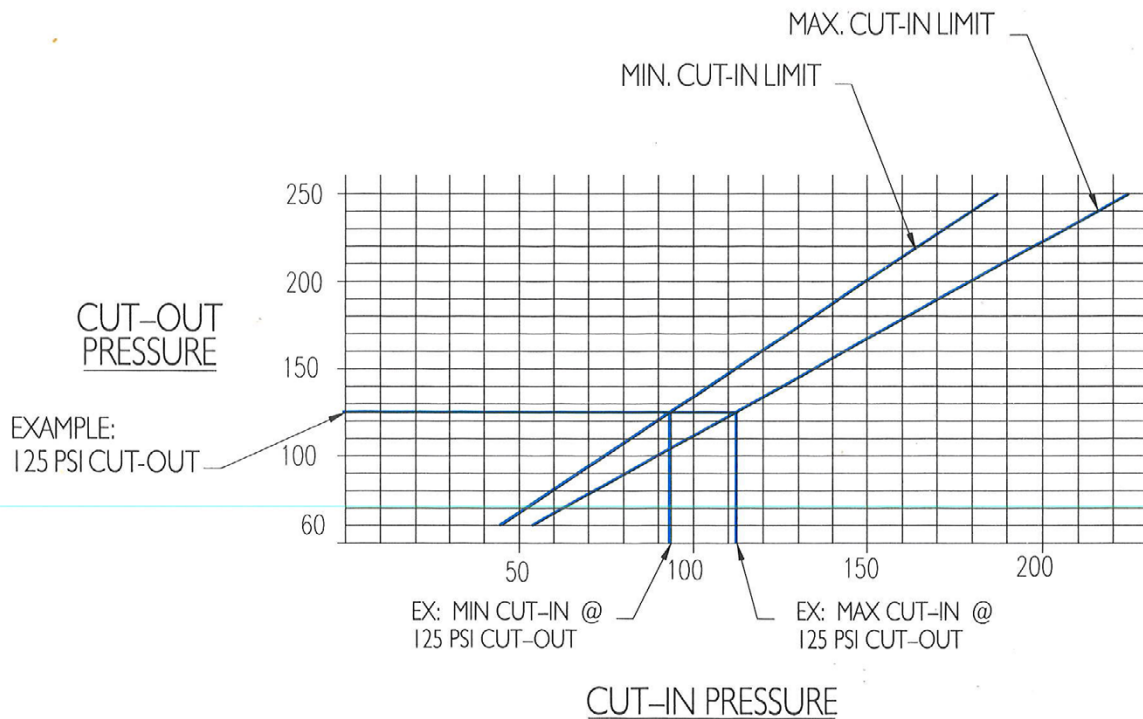
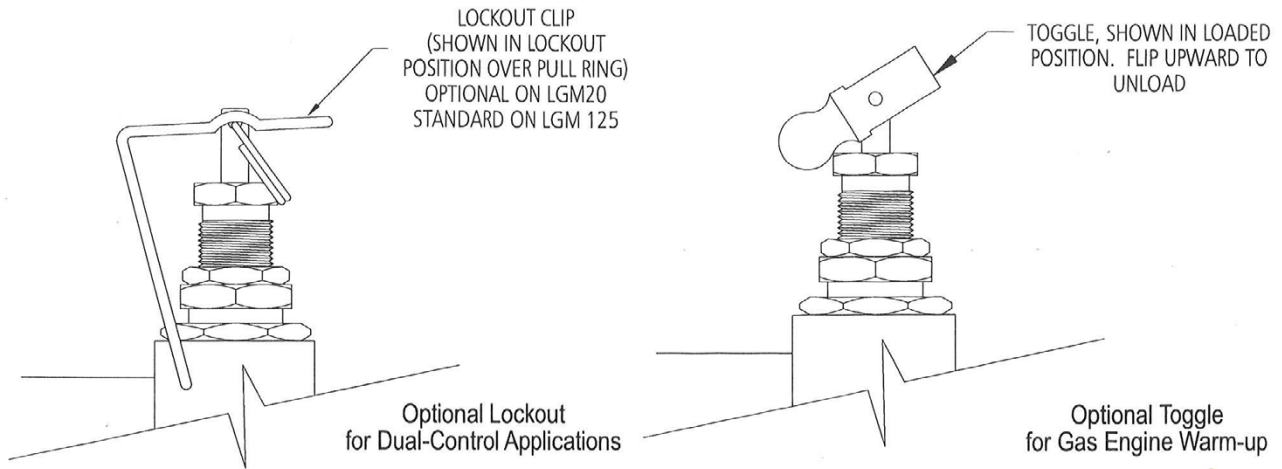
Options include a 1/8 NPT tapped port for throttle control of a gas engine, a lockout clip for "dual control" applications, a special 1/8 NPT tapped port for a pressure switch unloader valve, a vent port muffler, and a toggle unloading lever for one-hand warm up control.



PART NUMBER	INLET & OUTLET	VENT OUTLET	RECOMMENDED MAX FLOW RATE	DIMENSIONS				APPROX SHIPPING WT.
				A	B	C	D	
LGM20	1/2" FPT	3/8" FPT	20 SCFM	3.87	1.43	0.81	4.31	1-3/4 lbs.
LGM125	1-1/4" FPT	1" FPT	125 SCFM	4.58	3.04	1.58	7.56	6-1/4 lbs.

Load Genie®

Continuous Run Vent Unloaders



ORDER GUIDE

Example

LGM 20, 145-175, with throttle control port

Load Genie®
Continuous
Run Vent
Unloader

Cut-in and
Cut-out
pressure
settings

Available options:
Throttle control port
Toggle Unloader
Dual-control lockout clip
Vent port muffler
Special port for pressure switch unloader
line (dual-control configurations)

20 = model with 1/2 NPT inlet and outlet, max recommended flow, 20 SCFM

125 = model with 1-1/4 NPT inlet and outlet, max recommended flow, 125 SCFM

Note: standard valve comes with unloader sleeve and will be supplied if no options are specified