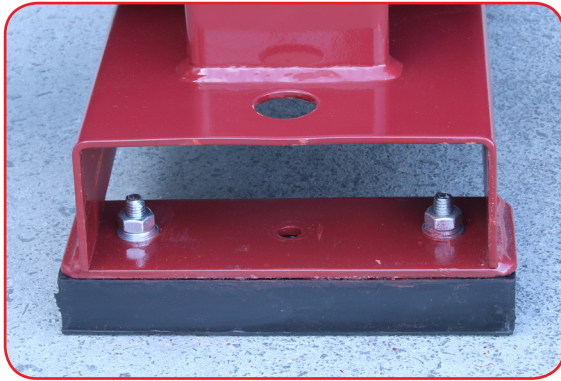


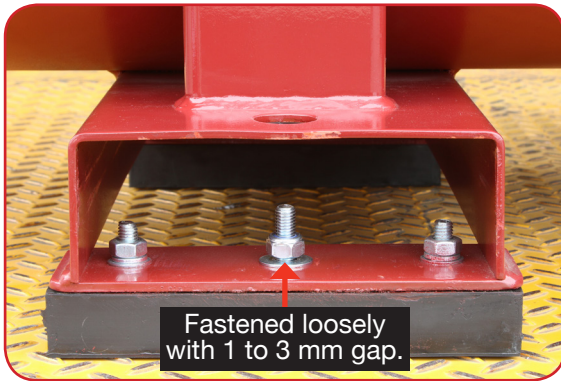


## Engine-Driven Compressor Mounting

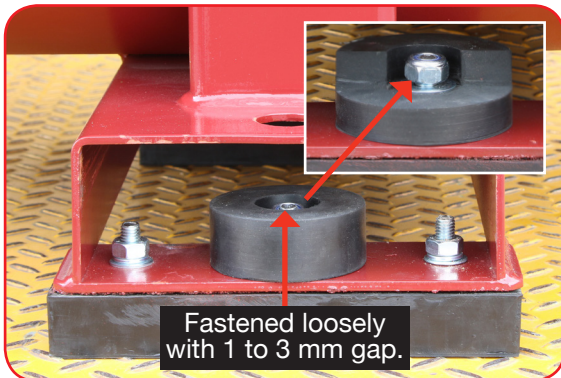
The correct mounting of a stationary Honda or Yanmar engine-driven compressor set is essential for vibration control. Please refer to the Instruction Manual and also the following illustrated guide for the recommended mounting methods. Failure to install the compressor set properly will likely result in misuse damage to the unit, which is not covered by warranty.



The compressor can be operated freestanding if mounted on its factory-supplied vibration isolators. Caution: The unit will move around when the engine is running.



The compressor set can be operated if bolted-down loosely through the factory-supplied vibration isolators with a gap of 1 to 3 mm to allow for vertical movement. Apply thread lock adhesive such as Loctite or use a nylon insert lock nut to prevent the central fastener from unscrewing.



### PREFERRED METHOD #1

The compressor set is best operated if bolted-down loosely through the factory-supplied compression and rebound vibration isolators with a gap of 1 to 3 mm to allow for vertical movement. Apply thread lock adhesive such as Loctite or use a nylon insert lock nut to prevent the central fastener from unscrewing.

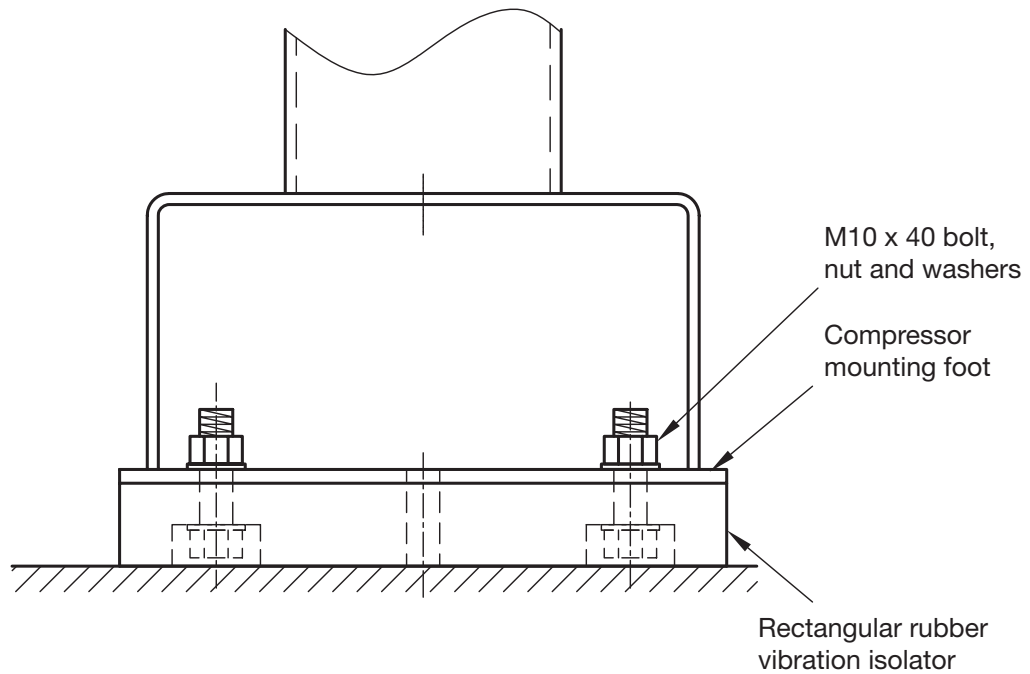
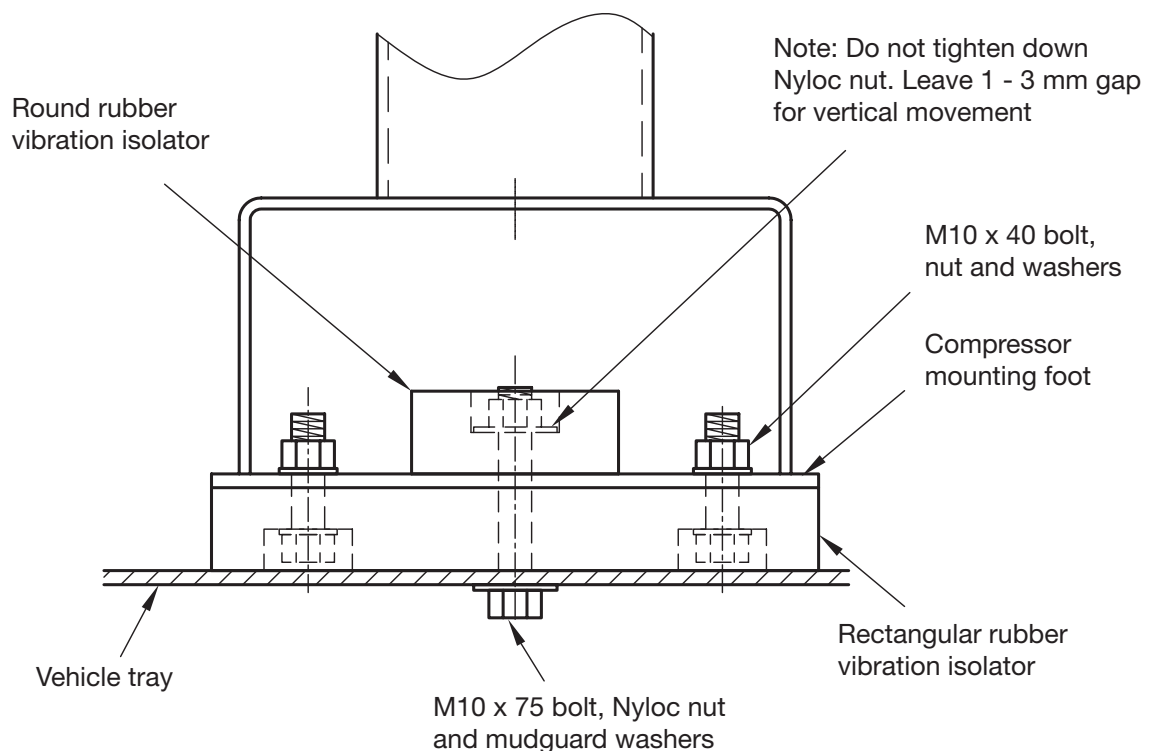


### PREFERRED METHOD #2

The compressor set can alternatively be best operated if mounted on correctly selected and installed industrial vibration isolators. Specialist providers include Mackay [www.mackayrubber.com.au](http://www.mackayrubber.com.au) and Embelton [www.embelton.com](http://www.embelton.com). Caution: It is critically important to specify whether the compressor set will be used in a fixed stationary or mobile application.

**AIRMAC**

## Engine-Driven Compressor Mounting

**Recommended Compressor Mounting for Portable Freestanding Applications****Recommended Compressor Mounting for Fixed Stationary or Mobile Applications**

**AIRMAC**

## Engine-Driven Compressor Mounting



DO NOT operate the compressor if still mounted on its original timber packing skid or any other timber pallet or skid.



DO NOT operate the compressor if bolted-down tightly onto a floor or vehicle without suitable vibration isolators.



DO NOT operate the compressor if bolted-down tightly through the factory-supplied vibration isolators such that there's no provision for vertical movement.